



REFRESHING MWD TECHNOLOGY

## NPD2 - Noralis Dual Transducer Decoding

The only 3rd party compatible dual-transducer surface decoding technology available in the market. The next generation of decoding power. Outperform the competition with unrivaled bandwidth and pulse detection powered by Noralis proprietary decoding algorithms



# NPD2 Features



## Physical

- Length : 6.5" (165 mm)
- Width : 4.5" (114 mm)
- Height : 1.75" (44.5 mm)
- Weight : 1 lb. (0.6 kg)

## Features

- Oil Company Approved and Recommended
- Patent Pending Suite of Adaptive Digital Filters
- Eliminates the Highest Cause of NPT Associated with MWD
- Data Rates Revive Mud Pulse and Outperform EM Telemetry Speeds
- Integrates Smoothly into Service Company's Existing Business Model
- Successfully Executing in Applications Previously Thought to be Unachievable

## Compatibility

- Use with Noralis (NDM) Technology
- Use with M-ARY encoding 3rd party tools



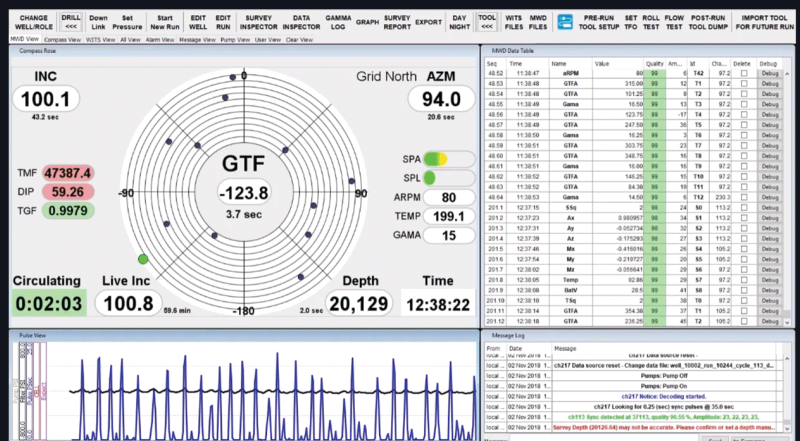
## Options

- Integrate the decoding cards into the RFD
- Keep the NPD2 modular to augment an existing NPD1 unit via USB

- 2 bps :: 0.25PW  
6-axis survey transmitted in 47s

- 4 bps :: 0.125PW  
6-axis survey transmitted in 24s

- Reduce Rig Flat Time
- Increased Data Density
- Transmit Analytics Without Sacrificing Critical Gamma Or Tool Face Updates



Noralis Ltd, Manor Farm Courtyard, Southam Ln, Cheltenham, Glos GL52 3 PB

UK: +44 (0) 1242.300316, US: +1.512.750.7550, sales@noralis.com, www.noralis.com